

# R44SL SERIES

High Purity / High Pressure Low Flow Regulator

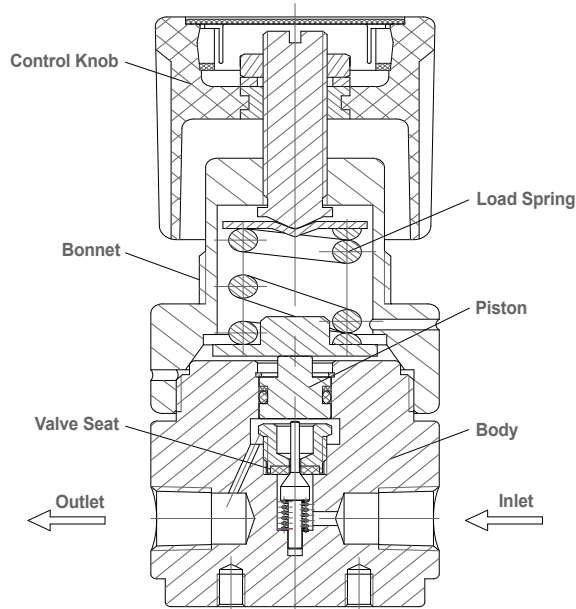
Specialty Gas Equipment



## » R44SLMK-BDK-C590-11-D

### Materials

- **Body** 316L Stainless Steel
- **Bonnet** 316L Stainless Steel
- **Seat** PCTFE
- **Diaphragm** 316L Stainless Steel
- **Adjusting Knob** ABS Plastic



GENTEC® R44SL Series High Pressure Stainless Steel Regulator is a Piston-Sensed Single-Stage High Purity Regulator designed for applications where high pressure and low flow control are desired.

### Product Features

- Piston-Sensed Configuration
- Metal-to-Metal Seal
- Body Port Size: 1/4" NPT(F)
- 2" Pressure Gauge

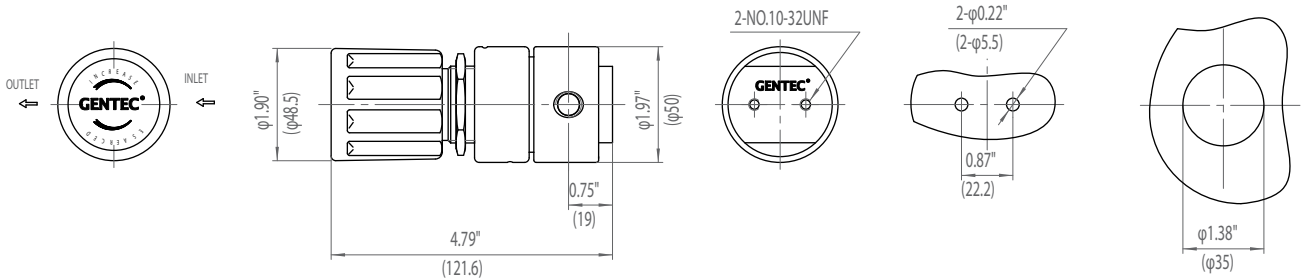
### Applications

- Gas Chromatography
- Research Laboratories
- Petrochemical Industry
- Power Plant

### Specifications

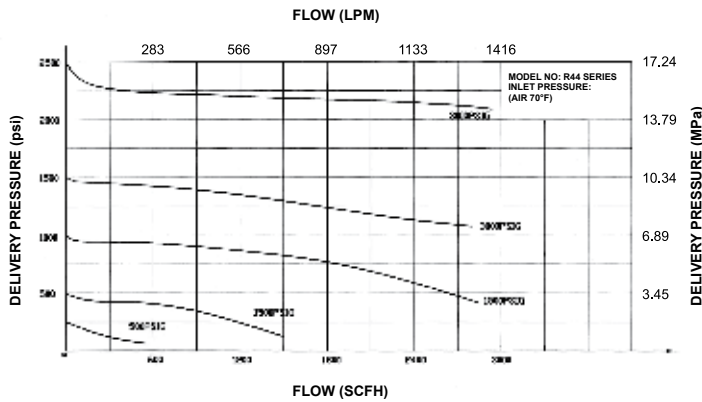
- **Maximum inlet pressure:** 6000 psig
- **Maximum outlet pressure:** 3000 psig
- **Safety test pressure:** 1.5 x Maximum inlet pressure
- **Temperature range:** -40°F~165°F (-40°C~ 74°C)
- **Inboard leakage:**  $2 \times 10^{-8}$  atm.cc/sec He
- **Outboard leakage:**  $2 \times 10^{-8}$  atm.cc/sec He inlet pressure: 1500 psig
- **Maximum Cv:** 0.06
- **Weight:** 2.2 lb

## Dimensions

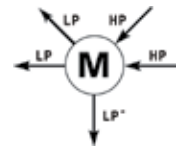


Rear Bracket Mount    Front Panel Mount  
Max. Thickness: 1/4" (7mm)

## Flow Data



### Body Port



## Ordering Information

EX: R44SL	M	K -	B	D	K -	C590 -	11 -	D
Series	Body Ports	Seat	Inlet Pressure Ranges	Outlet Pressure Ranges	Gauge	Inlet Connections	Outlet Connections	Options
• R44SL	M	K: PCTFE	B: 6000psig C: 4500psig D: 3000 psig	D: 0-3000psig E: 0-1500psig F: 0-500psig G: 0-250 psig	K: Gauge W: No Gauge	00: 1/4" NPT(F) C350: CGA350 C540: CGA540 C580: CGA580 C590: CGA590 C677: CGA677 C680: CGA680 C695: CGA695 Other connections available	00: 1/4" NPT(F) 01: 1/4" NPT(M) 10: 1/8" GENLOK 11: 1/4" GENLOK 14B: 1/4" Hose Barb Other connections available	Blank: None D: Diaphragm Valve N: Needle Valve P: Panel Mount Some valves not available depending on delivery pressures